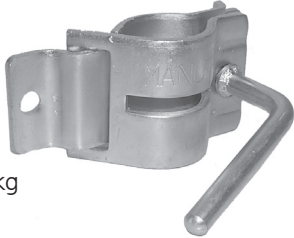


# FIXING BRACKETS

## CLAMP

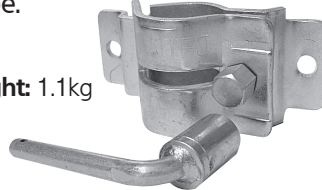
Bolt-on/ Weld-on  
To suit Standard & Medium range of J/Wheels & Stands using standard 48mm OD outer tube.



Unit Weight: 1kg

## CLAMPLH

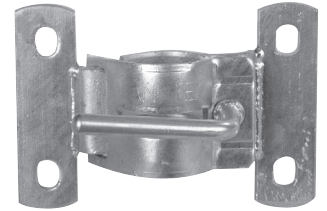
Bolt-on/ Weld-on  
Loose handle with socket fit  
To suit Standard & Medium range of J/Wheels & Stands using standard 48mm OD outer tube.



Unit Weight: 1.1kg

## BOAT CLAMP

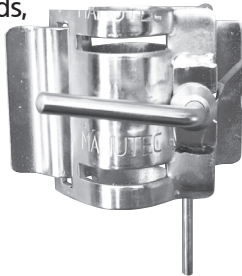
For Fixing with 3" U-Bolts  
To suit Standard & Medium range of J/Wheels & Stands using standard 48mm OD outer tube.



Unit Weight:  
1.5kg

## HDCLAMP48

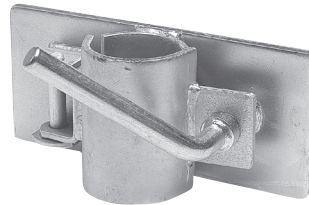
Weld-on  
To suit Medium and Heavy Duty range of J/Wheels & Stands, using standard 48mm OD outer tube.



Unit Weight: 1.8kg

## HDCLAMP60

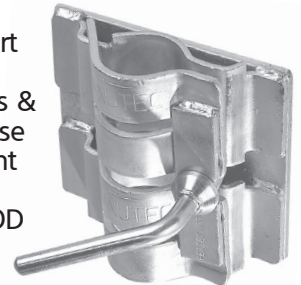
Weld-on  
To suit Heavy Duty range of J/Wheels & Stands, using heavy duty 60mm OD outer tube.



Unit Weight: 3.2kg

## DOUBLE CLAMP

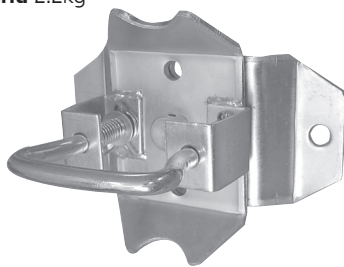
Weld-on  
Gives extra support on Standard & Medium J/Wheels & Stands. Ideal for use on the extra height J/Wheels using standard 48mm OD outer tube.



Unit Weight: 3.4kg

## LDSB1

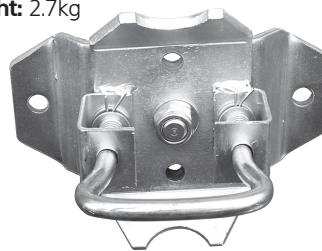
Bolt-on/ Weld-on  
Pin Locking Swivel bracket  
To suit Standard & Medium range of J/Wheels & Stands using standard 48mm OD outer tube.



Unit Weight: 2.2kg

## LDSB-HD

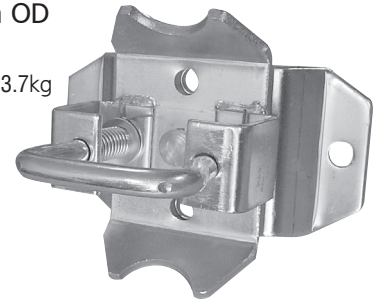
Bolt-on/ Weld-on  
Heavier Duty  
Pin Locking Swivel bracket  
To suit Standard & Medium range of J/Wheels & Stands using standard 48mm OD outer tube.



Unit Weight: 2.7kg

## HDSB1

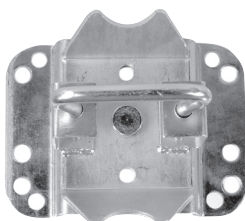
Bolt-on/ Weld-on  
Pin Locking Swivel bracket  
To suit Heavy Duty range of J/Wheels & Stands using heavy duty 60mm OD outer tube.



Unit Weight: 3.7kg

## UBSB

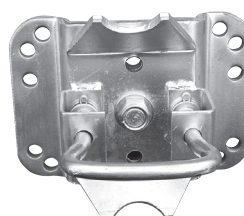
Pin Locking Swivel bracket  
To suit Standard & Medium range of J/Wheels & Stands  
For fixing with U-Bolts using standard 48mm OD outer tube.  
( suits 2", 3", 4", 5" & 6" U-Bolts )



Unit Weight: 2.6kg

## UBSB-HD

Heavier Duty  
Pin Locking Swivel bracket  
To suit Standard & Medium range of J/Wheels & Stands  
For fixing with U-Bolts using standard 48mm OD outer tube.  
( suits 2", 3", 4", 5" & 6" U-Bolts )



Unit Weight:  
3.2kg

## HDSP

Weld-on  
Heavy Duty Swivel Plate  
To suit Heavy Duty range of J/Wheels & Stands using heavy duty 60mm OD outer tube.



Unit Weight: 3.3kg